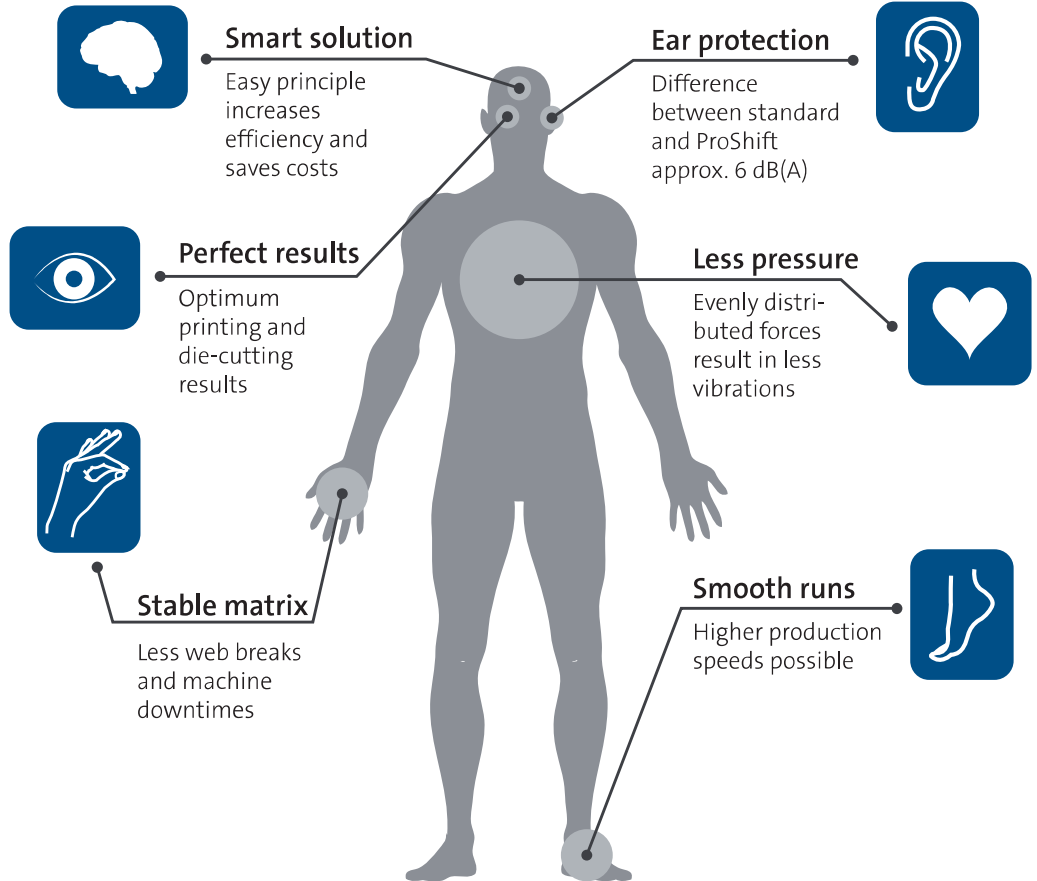
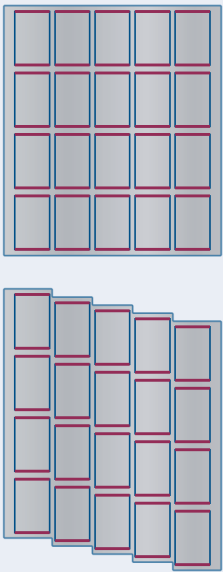
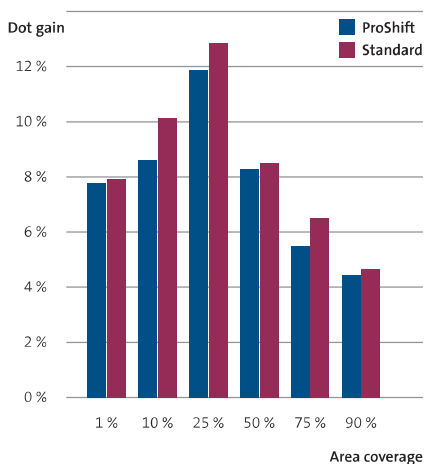


How it works

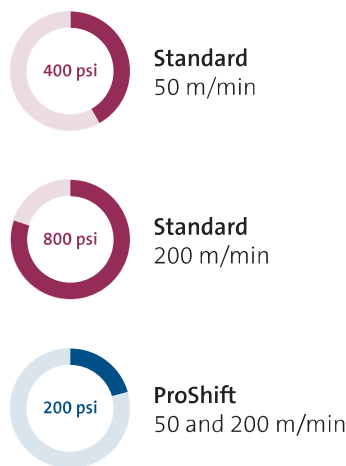
On ProShift flexible dies, the labels are shifted vertically (in web direction). This minimizes the length of simultaneously cutting lines across, so that the die-cutting pressure can be reduced significantly.



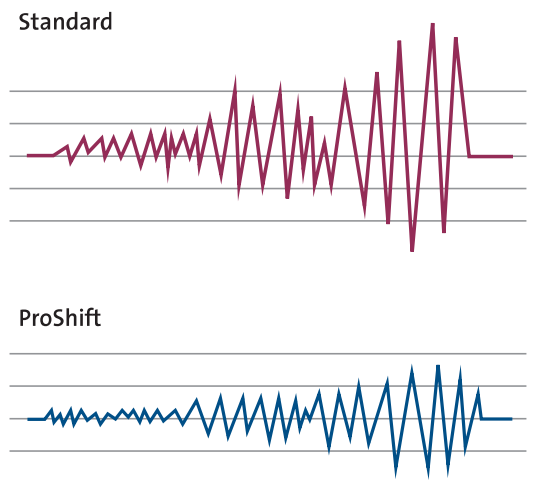
Reduced dot gain



Reduced pressure



Reduced noise



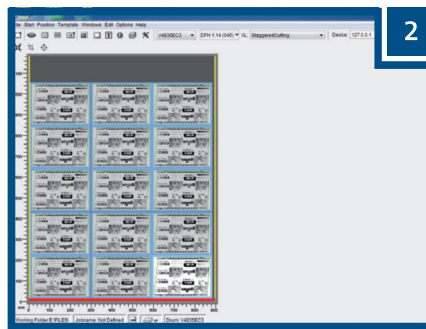
Staggered printing supported by



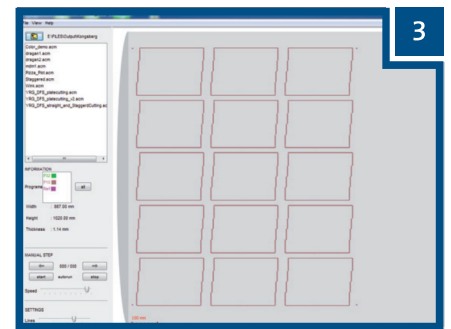
Staggered plates & dies - The easy way



Make Step & Repeat in *Plato* or *ArtPro Powerstepper*, select „Staggered Cutting“ dialogue box and automatic drawing tool.



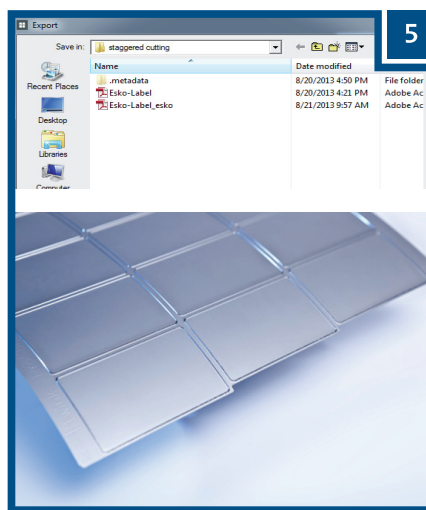
Merge Len (1-bit tiff engraving) files to fill up the full plate (green line is cutting path).



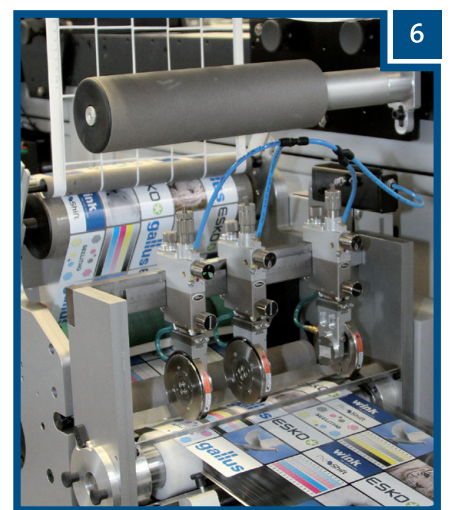
Kongsberg table cutting file (ACM) is automatically generated.



Cut printing plate on Kongsberg table.



Export cutting contour and order ProShift flexible die from Wink.



Enjoy the results!

Staggered printing supported by

